

Date: 10 th Nov 2016	FlexiSoft Software Release Note	RN-SW-V2.32
Software Version: 2.32		

1. New Software Version:

FlexiSoft version 2.32 is now available. You can download it from our website using following link:
<http://www.renuelectronics.com/software.htm>

Version 2.32 installable user needs to uninstall the versions (2.31 and earlier) from your machine manually as from now we have a common installable for Windows® 10/8/7.

2. New Products added in this Release:

2.1 New FL055 series FlexiLogics PLCs (FL055-0404P0802U)

We are pleased to announce new model of FlexiLogics® programmable logic controller FL055. The new FL055 expandable PLC comes with various features and expandable IO's and is suitable for variety of complex machine control applications that includes applications for Hazardous location (UL Class I Div 2)

Ordering Information

FL055 -0404P0802U	CPU model with 4DI, 4DO PNP type, 8AI, 2AO, 2 Serial ports (1 RS232, 1 RS485), 1 USB device, 1 Ethernet, 1 SD Card Slot.
-------------------	--

What's New with FL055 Series

SD Card slot

FL055 models come with SD Card slot. User can use microSD HC (High capacity) cards with storage capacity from 4GB to 32GB. Supported speed classes are



User can directly log data on SD Card and transfer it over FTP and Upload, Download their application through it.

2.2 New FL050-V2 FlexiLogics PLCs (FL050-V2)

We are pleased to announce new model of FlexiLogics® programmable logic controller FL050-V2. The new FL050-V2 expandable PLC comes with various features and expandable IO's and is suitable for variety of complex machine control applications that includes applications for Hazardous location (UL Class I Div 2)

Ordering Information

FL050 – V2	CPU model with, 2 Serial ports (1 RS232, 1 RS485), 1 USB device, 1 Ethernet, 1 SD Card Slot.
------------	--

What's New with FL050-V2 Series

SD Card slot

FL050-V2 models come with SD Card slot. User can use microSD HC (High capacity) cards with storage capacity from 4GB to 32GB. Supported speed classes are



User can directly log data on SD Card and transfer it over FTP and Upload, Download their application through it.

2.1 New FP2 series FlexiPanels

We are pleased to announce the brand new series of FlexiPanels Human Machine Interface product line FP2

The new FP2 series HMIs comes with attractive slim housing, and is suitable for variety of applications that includes applications for Hazardous location (UL Class I Div 2)

Ordering Information

FP2020-0604P-A0401L	16x2 Text Display, Built in 6DI (Sinking), 4DO (PNP), 2 Voltage Inputs, 2 Current Inputs, 1AO (Voltage/Current), 24VDC, 1 USB Programming Port.
FP2020-0808RP-A0401L	16x2 Text Display, Built in 8DI (Sinking), 8DO (6 Relay, 2 PNP), 2 Voltage Inputs, 2 Current Inputs, 1AO (Voltage/Current), 24VDC, 1 USB Programming Port.
FP2020-0808P-A0401L	16x2 Text Display, Built in 8DI (Sinking), 8DO (PNP), 2 Voltage Inputs, 2 Current Inputs, 1AO (Voltage/Current), 24VDC, 1 USB Programming Port.

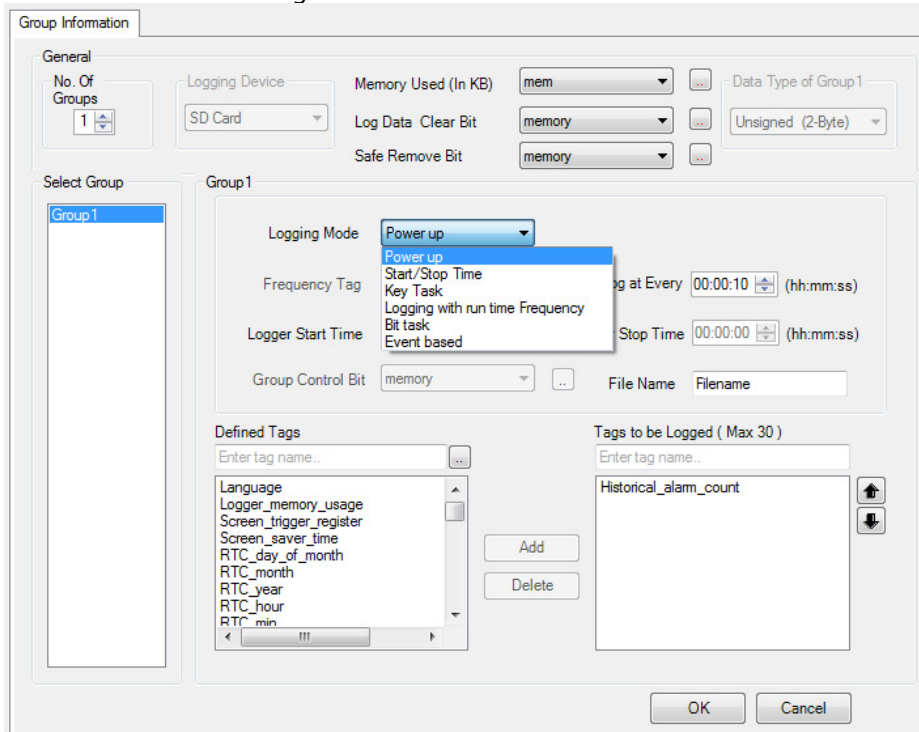
What's New with FP2 Series

- 16x2 Text Display now supports analog I/O's along with digital I/O's to provide complete solution.
- Support for High Speed Counter with 200KHz
- High Speed Pulse output up-to 10KHz
- IEC61131-3 programming environment.

3. New Features:

3.1 Data Logging in SD Card

In the Project tree the user will find Data Logging with two options Internal Memory and External Memory. The User has to define three tags a DWORD/DINT or DWORD tags for Memory used and a Coil/Bit tags for safe remove and data log clear bit.



All the data logging features for internal memory will be as it is and user can also define data logging in external memory as well. The Historical Trend and Printing option will not work for external data logging.

The user needs to turn Safe Remove Bit on before taking SD card in/out in the slot.

The data log file may get corrupted if user removes or insert the SD card without turning safe remove bit ON.

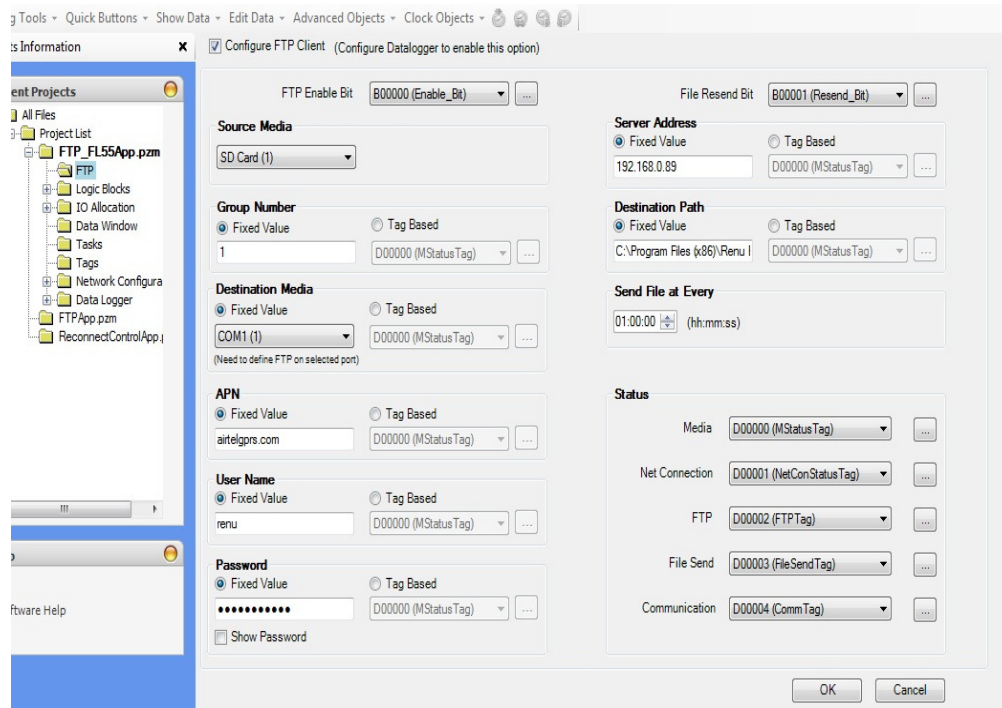
Up-to 1500 tags maximum can be logged with 50 groups of 30 tags each for external memory up-to 120 tags maximum for internal with 4 groups of 30 tags each are fixed.

This feature will be available on FP3-TN models, FL55 and FL50-V2 products.

3.2 FTP-Client

The FTP (File Transfer Protocol) Client is supported in FP3043TN/FP3070TN/FP3102TN/FL50-V2 and FL055-0404P-0802U products in which the user can log data in external memory(SD card) and transfer the logged data to the FTP server by following ways.

- a) The user must configure the data logging in external memory and the time interval for sending file to FTP should be greater than the time interval for logging.
- b) The user had to configure FTP client by the following ways.



User can give constant setting or can give tag based setting which he can change in the runtime. For using Com port for FTP user needs to connect GSM Gateway to the com port and needs to provide the APN (Access Point Name) of the Service provider for the Sim card used in gateway as

For Airtel – www.airtelgprs.com

For IDEA – imis/ internet

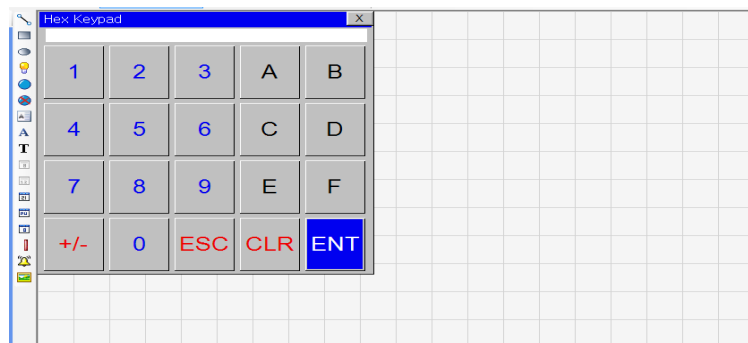
For Vodafone – [www](http://www.vodafone.com)

And so on user can see the APN in the phone settings for different service providers.

It is recommended to use small file size to send through GPRS gateway as due to connectivity issues large files may show errors while uploading to server.

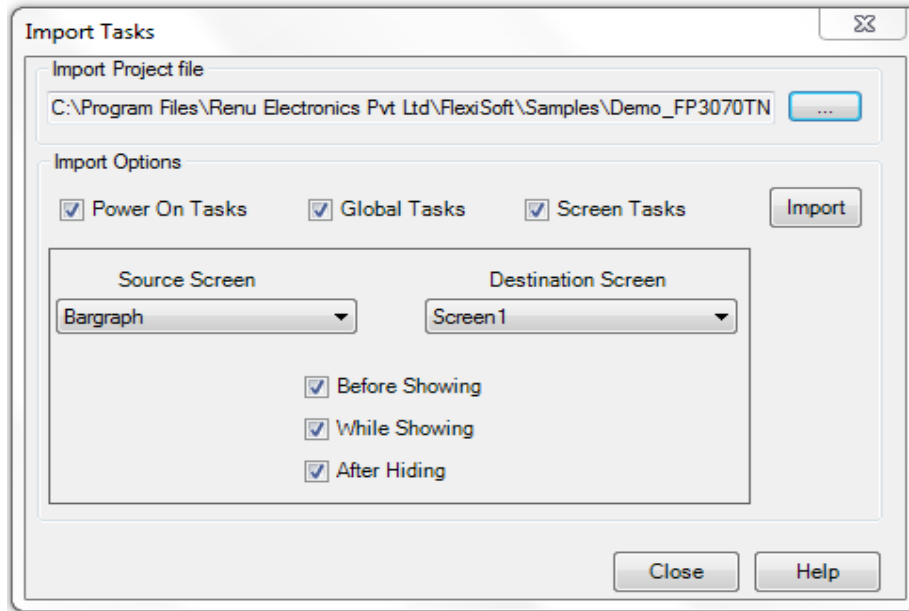
3.3 Pop-Up Screen

Now the pop-up screen will show the main screen in the background with grids so that user can easily position his pop-up in any part of the screen.



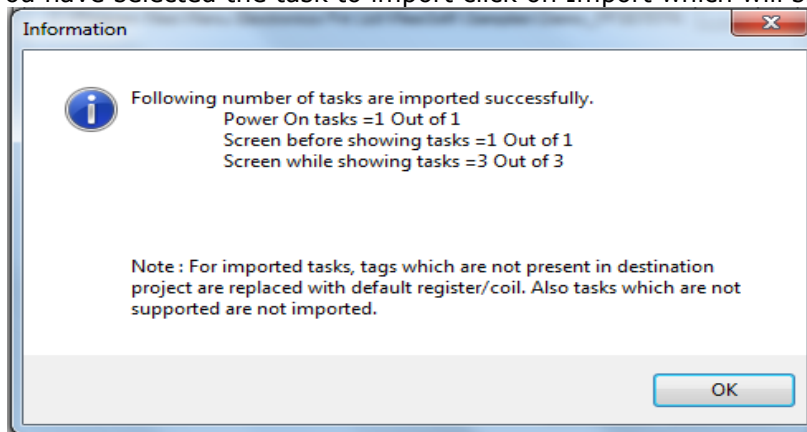
3.4 Task Import

Now we can import task from one application to other, you will find the Import Task Option in >>> Tools Menu with multiple options as shown below



For this option to use we should follow below Steps.

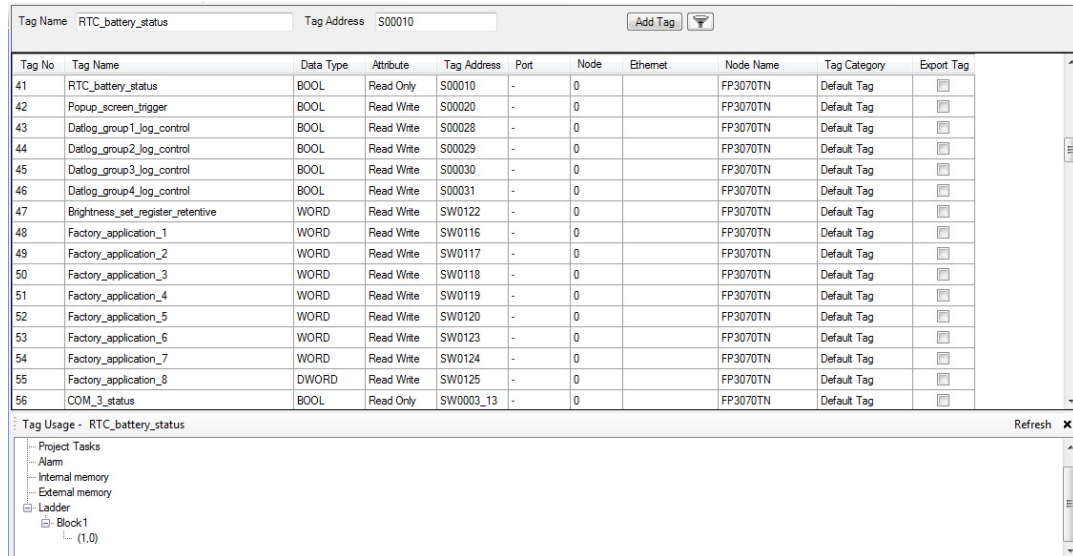
1. First import tags from the project you want to import tasks.
2. Then import screen from the project you want to import the screen task, this step can be skipped then you can import task of Screen 1 of the one project to any of the screen of the other project also.
3. Now go to import task if you will not take the step1 then system will assign Default Coil or DefaultReg in the tasks which have tags assigned as the project will not find the tags.
4. Once you have selected the task to import click on Import which will show you the status as



5. If you click import with same option multiple times then same task multiple times will be added in the respective field which you have to remove manually.
6. This feature will work for all applications developed in FlexiSoft 2.30.39 and later versions.

3.5 Tag Usage Window

When the user wants to check the tag usage then the user need to right click on the tag in the tag database and select tag usage option. The window will open at the bottom instead of earlier window and user can view the tags used across the project and can navigate through the project. It will not hide until user closes it.



Tag No	Tag Name	Data Type	Attribute	Tag Address	Port	Node	Ethernet	Node Name	Tag Category	Export Tag
41	RTC_battery_status	BOOL	Read Only	S00010	-	0		FP3070TN	Default Tag	<input type="checkbox"/>
42	Popup_screen_trigger	BOOL	Read Write	S00020	-	0		FP3070TN	Default Tag	<input type="checkbox"/>
43	Datalog_group1_log_control	BOOL	Read Write	S00028	-	0		FP3070TN	Default Tag	<input type="checkbox"/>
44	Datalog_group2_log_control	BOOL	Read Write	S00029	-	0		FP3070TN	Default Tag	<input type="checkbox"/>
45	Datalog_group3_log_control	BOOL	Read Write	S00030	-	0		FP3070TN	Default Tag	<input type="checkbox"/>
46	Datalog_group4_log_control	BOOL	Read Write	S00031	-	0		FP3070TN	Default Tag	<input type="checkbox"/>
47	Brightness_set_register_retentive	WORD	Read Write	SW0122	-	0		FP3070TN	Default Tag	<input type="checkbox"/>
48	Factory_application_1	WORD	Read Write	SW0116	-	0		FP3070TN	Default Tag	<input type="checkbox"/>
49	Factory_application_2	WORD	Read Write	SW0117	-	0		FP3070TN	Default Tag	<input type="checkbox"/>
50	Factory_application_3	WORD	Read Write	SW0118	-	0		FP3070TN	Default Tag	<input type="checkbox"/>
51	Factory_application_4	WORD	Read Write	SW0119	-	0		FP3070TN	Default Tag	<input type="checkbox"/>
52	Factory_application_5	WORD	Read Write	SW0120	-	0		FP3070TN	Default Tag	<input type="checkbox"/>
53	Factory_application_6	WORD	Read Write	SW0123	-	0		FP3070TN	Default Tag	<input type="checkbox"/>
54	Factory_application_7	WORD	Read Write	SW0124	-	0		FP3070TN	Default Tag	<input type="checkbox"/>
55	Factory_application_8	DWORD	Read Write	SW0125	-	0		FP3070TN	Default Tag	<input type="checkbox"/>
56	COM_3_status	BOOL	Read Only	SW0003_13	-	0		FP3070TN	Default Tag	<input type="checkbox"/>

Tag Usage - RTC_battery_status

- Project Tasks
 - Alarm
 - Internal memory
 - External memory
 - Ladder
 - Block1
 - (1,0)

3.6 Communication Parameter Setting change in runtime in PLC

Now we can change the communication parameters like Baud Rate, Parity, Data Bits, Stop Bit and ID on runtime through tags like Baud_Rate_Com1, Parity_Com1 etc.

For enabling this option we need to uncheck the box Download Communication Parameters while configuring the Network protocol. User can take the tags of communication parameters on data window or network rest all will be same as in HMI.

Note: - If we put any unauthorized entry in any of the tags defined above then while initializing the com port the last valid value will be automatically shown.

3.7 Ethernet Settings can be changed at Runtime in PLC and HMI

Now user can change the IP Address, Subnet Mask , Gateway at the runtime also all he need to do is to put the value in the reconfigurable tags and turn Ethernet initialization on to validate the change. User can also make DHCP Enable /Disable on the runtime.

3.8 Fast Compilation for repeated download operation

Now the time taken for download operation for project is reduced for multiple download the creating project image time will be reduced for repeated download.

3.9 Modbus Master Model conversion

Now user can change the Modbus Master model from 1 Word to 16 Word and Vice Versa.

3.10 Text Wrap and Maximum limit of characters to 255

Now user can write 255 characters on buttons and lamps and the text wrap is also available.

3.11 HMI USB Device

Now with this installable the USB device driver will be installed automatically in the operating system, if not already installed.

4. Known Issues:

4.1 In X-Y Plot when we change to data points less than the previous value of data points then we have to manually write 0 to XY_Index tag for proper functioning of X-Y Plot.

4.2 In Load Cell Module the negative weight will not be shown in Net Weight tag and Gross Weight tag.

5. Backward compatibility:

5.1 For importing tasks the application should be developed or saved in 2.30.39 or later versions first then we can import the tasks in any version of FlexiSoft.

5.2 For using old application first time with this version, user needs to download the Firmware, Application and Ladder at least once to product as some of new default tags are added for new functionalities.